



# REVISED FLOOD INSURANCE RATE MAPS AND YOUR PROPERTY

## NEW FLOOD HAZARD ZONES

The **Federal Emergency Management Agency (FEMA)** has prepared revised maps that identify new flood hazard zones within Boise, as well as Ada and Canyon Counties. The source of flooding in Boise is the Boise River.

### Revised Flood Maps

The map revisions reflect recent engineering studies and other updated information.

The final maps will indicate where mortgage lenders may require flood insurance and where special development regulations may apply.

Property owners are encouraged to review the revised flood maps.

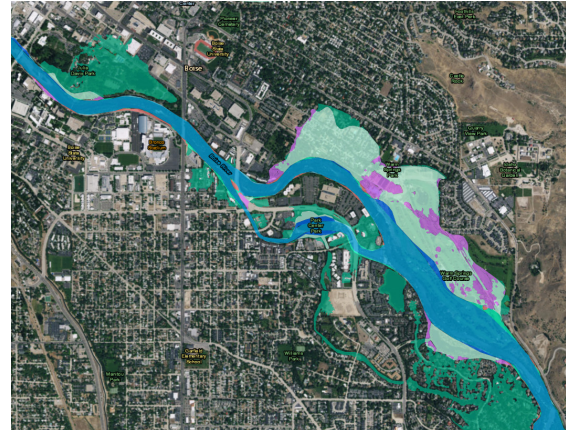
- **Online Maps**  
Available at [gis.adacounty.id.gov/Floodplain](http://gis.adacounty.id.gov/Floodplain).
- **Paper Maps**  
Paper maps are available at the City of Boise's Planning and Development Services Department on the 2nd floor at 150 N. Capitol Boulevard, Boise.

### Requesting Changes

Property owners who believe mapping on their land is inaccurate may request changes to the maps. The process for requesting a map change will be discussed at all three open houses.

### Additional Information

- Attend an Open House.
- Call the FEMA Map Information eXchange (FMIX) at (877) 336-2627 or visit FEMA's Flood Map Service Center at [msc.fema.gov](http://msc.fema.gov).
- Call the City of Boise Planning and Development Services Department at (208) 608-7100.



An interactive map is available online at [gis.adacounty.id.gov/Floodplain](http://gis.adacounty.id.gov/Floodplain).

## Questions?

### Attend an Open House

Ada and Canyon Counties will host open houses for all residents. Federal Emergency Management Agency representatives will provide information and answer questions about revisions to the Flood Insurance Rate Maps (FIRMs) along with information concerning local ordinances and fire risk.

### Talk to FEMA at an Open House

- **Tuesday, January 31, 2017**  
6:00 to 8:00 PM (Presentation at 6:15 PM)  
Canyon County Administration Building  
111 N. 11th Avenue, Caldwell
- **Wednesday, February 1, 2017**  
6:00 to 8:00 PM (Presentation at 6:15 PM)  
Ada County Courthouse  
200 W. Front Street, Boise  
Boise representatives will be present.
- **Thursday, February 2, 2017**  
6:00 to 8:00 PM (Presentation at 6:15 PM)  
Lowell Scott Middle School  
13600 W. McMillan Road, Boise  
Boise representatives will be present.